

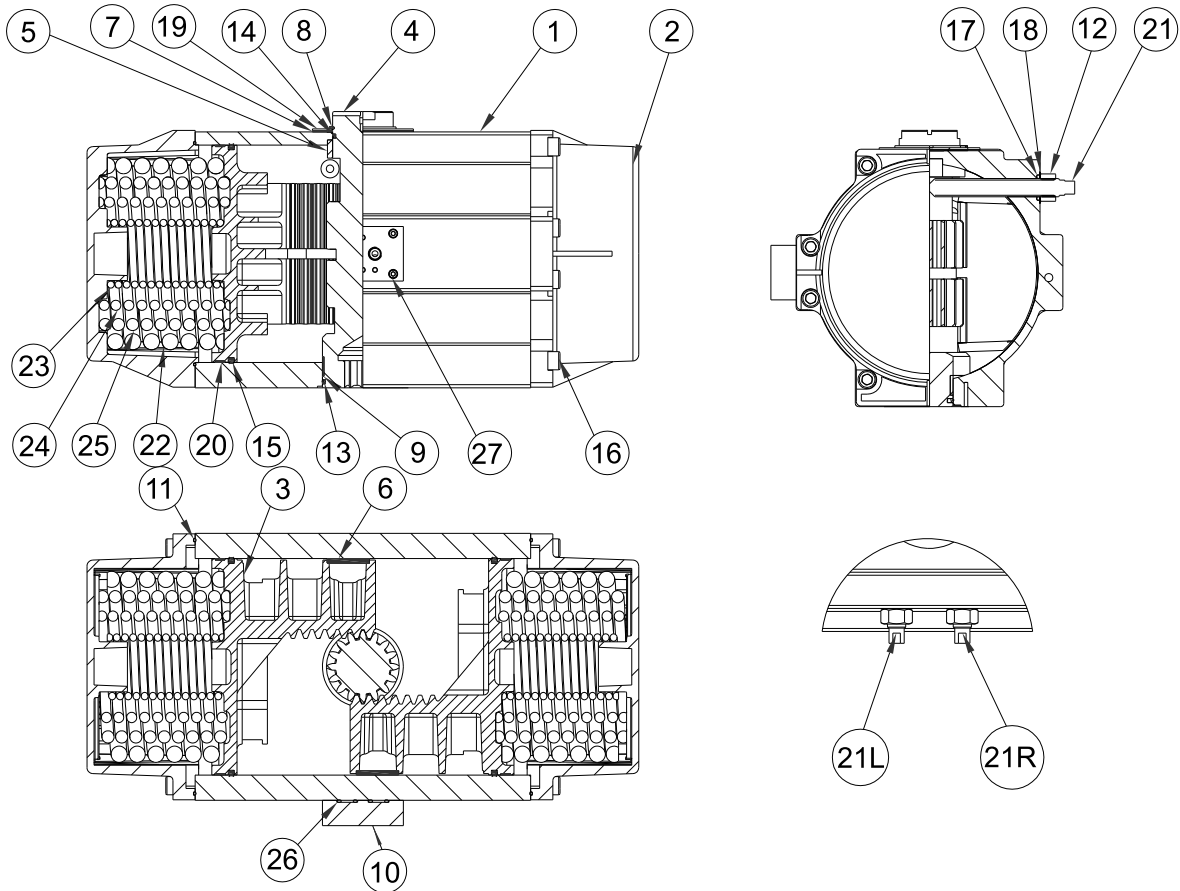


ROTEX
CONTROLS, INC.

21, Sullivan Parkway,
Fort Edward, NY 12828
www.rotexcontrols.com

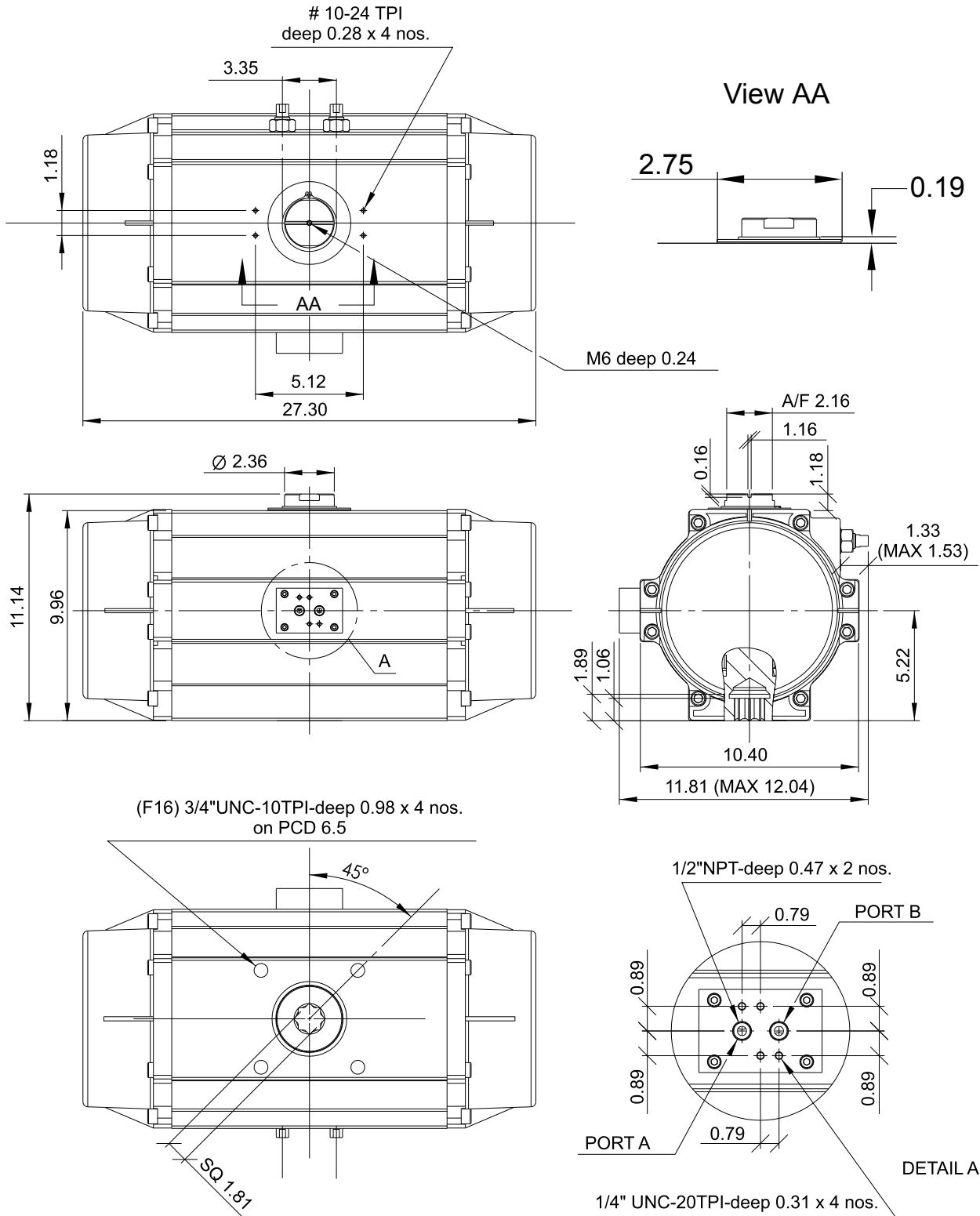
Technical Data sheet
Rev."4" Dated 02/08
MODEL: ECV250

Page 1 of 2



| | | | | | |
|----|------------------------|-----|----------------------|----------------|---------------------------|
| 27 | Hex Socket screw | 4 | AISI 304 | - | - |
| 26 | O ring | 2 | NBR | - | - |
| 25 | Middle outer spring | 2 | Spring Steel Grade 3 | - | Epoxy Powder Coated |
| 24 | Middle inner spring | 2 | Spring Steel Grade 3 | - | Epoxy Powder Coated |
| 23 | Inner spring | 2 | Spring Steel Grade 3 | - | Epoxy powder coated |
| 22 | Outer spring | 2 | Spring Steel Grade 3 | - | Epoxy powder coated |
| 21 | Stoke adjustment screw | 2 | HGA Steel | 12.9 Grade | Zinc passivation |
| 20 | Piston bearing | 2 | Polyacetal | - | - |
| 19 | Washer | 1 | AISI304 | - | - |
| 18 | Washer | 2 | AISI304 | - | - |
| 17 | O ring | 2 | NBR | - | - |
| 16 | Hex socket screw | 16 | AISI304 | - | - |
| 15 | Piston Seal | 2 | Polyethylene | - | - |
| 14 | Pinion seal | 1 | Polyethylene | - | - |
| 13 | Pinion seal | 1 | Polyethylene | - | - |
| 12 | Lock nut | 2 | AISI304 | - | - |
| 11 | Cover seal | 2 | NBR | - | - |
| 10 | Manifold | 1 | Aluminium | LM 6 | Epoxy powder coated |
| 9 | Pinion bearing | 1 | Polyacetal | - | - |
| 8 | External Circlip | 1 | Spring Steel | DIN471(1S3075) | Nickel plated |
| 7 | Washer | 1 | Polyacetal | - | - |
| 6 | Piston bearing | 2 | Polyacetal | - | - |
| 5 | Pinion bearing | 1 | Polyacetal | - | - |
| 4 | Pinion | 1 | Steel | EN-8 | Electroless nickel plated |
| 3 | Piston with Rack | 2 | Aluminium | LM6 | - |
| 2 | Cover | 2 | Aluminium | LM6 | Epoxy powder coated |
| 1 | Body | 1 | Aluminum Alloy | 6063T6 | Hard anodized |
| NO | PART DESCRIPTION | QTY | MATERIAL | SPECIFICATION | CORROSION PROTECTION |

This drawing is property of Rotex Controls Inc. this drawing contains confidential information of Rotex Controls Inc., It must not be disclosed to third party, competitors or copied or lent without the written consent of Rotex Controls Inc.



| Pinion inches | Min | Max | Pinion mm | Min | Max |
|---------------|-------|-------|-----------|-------|-------|
| 1.81 | 1.812 | 1.817 | 46.0 | 46.02 | 46.16 |

This drawing is property of Rotex Controls Inc. this drawing contains confidential information of Rotex Controls Inc., It must not be disclosed to third party, competitors or copied or lent without the written consent of Rotex Controls Inc.